

Robertson Geo is the preferred choice for the provision of borehole data for water well exploration, evaluation and maintenance. Its data wireline technologies and service is consistently delivering data and interpretation for projects in varied and challenging global locations.



**ROBERTSON
GEO**

**WATER &
ENVIRONMENTAL**
Unlocking Your GeoData

Water & Environmental

Publication No: 005 RGO/23

Borehole logging SUBSURFACE CHARACTERISATION AND DATA ACQUISITION

Groundwater exploration
Water well evaluation
Well performance and sustainability monitoring
Hydrology and contamination monitoring
Dam site investigation

International concerns over environmental issues such as pollution and its policing recognise Robertson Geo groundwater data provision and monitoring as an increasingly important activity for the identification of Hydrology and Contaminant issues.

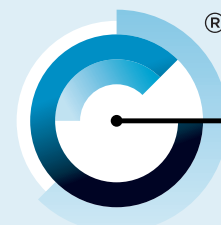
Water & Environmental

Robertson Geo is the market leader and globally the largest supplier of slimhole wireline logging instrumentation systems with its comprehensive offer of geophysical probes and supporting surface equipment purpose designed and built in-house.



*Images are representational
and not necessarily to scale
- see specifications on
pages 6 through 19*

With many years of international experience and after evaluating thousands of wells often in difficult and challenging environments and locations, Robertson Geo logging technologies has a results proven record for delivering quality data for the exploration, characterisation, performance and environmental monitoring of groundwater wells.



**ROBERTSON
GEO**

**WATER &
ENVIRONMENTAL**
Unlocking Your GeoData

Groundwater wells

Borehole logging is proven to be the most cost effective methodology of characterising the construction, performance and sustainability of water wells.

Geophysical logging provides subsurface data not only at the initial drilling procedures but also for the essential monitoring of well performance identifying problems before they become costly failures.

Robertson Geo wireline logging equipment is portable and easy to use providing real time evaluation data and interpretation at the well location. Its proven technology is in use worldwide by water drillers, hydrologists, environmental consultants and agencies, the military and research universities.

Robertson Geo technologies deliver reliable, calibrated quality data for exploration, to locate water tables or perched water bodies, to characterise aquifers and aquitards, to establish potential water yields and for evaluation of new water wells to check the grout integrity behind the casing, to measure borehole depth, dimensions and verticality and to provide permanent records for monitoring studies.

Environment

Regular well maintenance is essential to check for productivity, leaks, obstructions, casing corrosion and grout degradation and with ever increasing international concerns and policing relating to environmental issues, the use of Robertson Geo data acquisition technology is increasingly important for identifying and monitoring hydrology and contamination issues.

Logging services

Robertson Geo engineers are experienced, highly trained and can be deployed to any global location.

The complete catalogue of equipment is available on a service basis operated by these field crews. They are capable of prolonged logging services with minimum outside support and are expert in data processing and interpretation.

These are very cost effective contracting services in circumstances where projects do not justify purchasing equipment and the necessary back up facilities.

Equipment supply

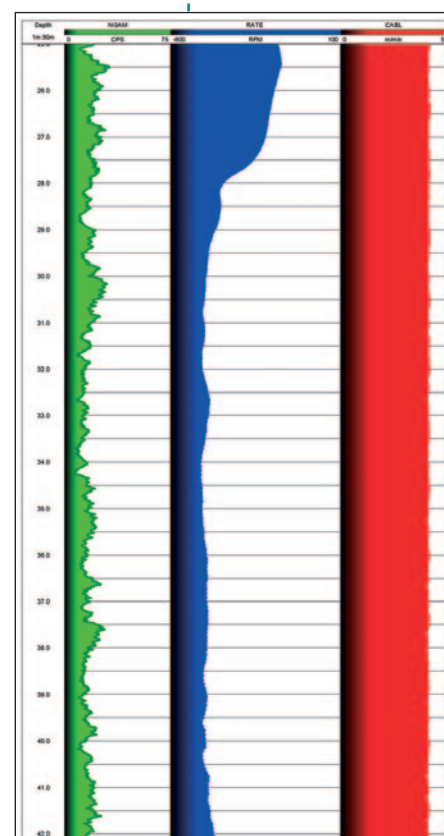
All Robertson Geo probes are fully tested and calibrated at the Deganwy facility prior to dispatch, eliminating testing time on site and ensuring the probes are fully operational prior to downhole use.

Depending on customer needs operational and customised training can be provided; this for winch use, probe deployment, logging techniques, data capture and equipment maintenance and troubleshooting.

Equipment rental

Robertson Geo equipment is available to rent with a minimum rental period of 3 days in the USA or 15 days elsewhere. Full systems (including winches) or individual probes can be rented as required with borehole and classroom based training made available for rental customers.

In-house data management and log processing services are available for rental equipment clients, at an additional cost.



Example of data created by the Impeller Flowmeter probe.

Further data examples are shown with each specification page for probes and where applicable surface equipment on pages 6 through 19.

Robertson Geo is the only logging services provider with a QMS certified to ISO 9001, comprehensively calibrating all of its logging systems and uniquely using an on-site borehole for testing at its Deganwy test well and calibration facility.

Probes

Electric Log: the classic water-well combination probe combining shallow, medium and deep penetrating resistivity measurements with Self-Potential (SP). *See page 6*

Temperature Conductivity: provides a continuous depth-based measurement of fluid temperature and conductivity. A natural gamma detector is included for correlation purposes. *See page 7*

Dual Focussed Induction: provides two simultaneous conductivity logs, corresponding to “medium” and “deep” radii of investigation into the formation. *See page 8*

3-Arm Caliper: provides a single continuous log of borehole diameter as recorded by three mechanically coupled arms in contact with the borehole wall. *See page 9*

Impeller Flowmeter: provides a continuous log of vertical fluid velocity within a borehole. *See page 10*

Fluid/Gas Sampler: probes are used to recover discrete samples of well fluid at a particular depth and return it uncontaminated to the surface. *See page 11*

Heat-Pulse Flowmeter: used to detect low vertical flows within a borehole below the threshold limits of conventional impeller tools. *See page 12*

Dual Neutron: the probe of choice for quantitative formation fluid studies providing a calibrated borehole compensated porosity measurement. *See page 13*

Formation Density: uses dual shielded detectors to provide a borehole compensated density measurement with good bed-boundary resolution. *See page 14*

Borehole Geometry: consists of a 4-arm caliper combined with a verticality measurement. The probe can replace the standard 3-arm caliper with advantage where the borehole cross-section departs from circular and where directional information is required for well completion studies and formation stress analysis. *See page 15*

Full Waveform Sonic: provides high quality formation acoustic velocity data. Options are available for display of full waveform data and cement bond data (CBL) in cased boreholes. *See page 16*

Surface equipment

Micrologger2: surface interface system for handling logging data acquisition, which supports all Robertson Geo probes, including acoustic and imaging tools. *See page 17*



Winlogger: MS Windows based operating system for the Micrologger2, provides field acquisition capability. In-house processing, interpretation and reporting is undertaken. *See page 17*

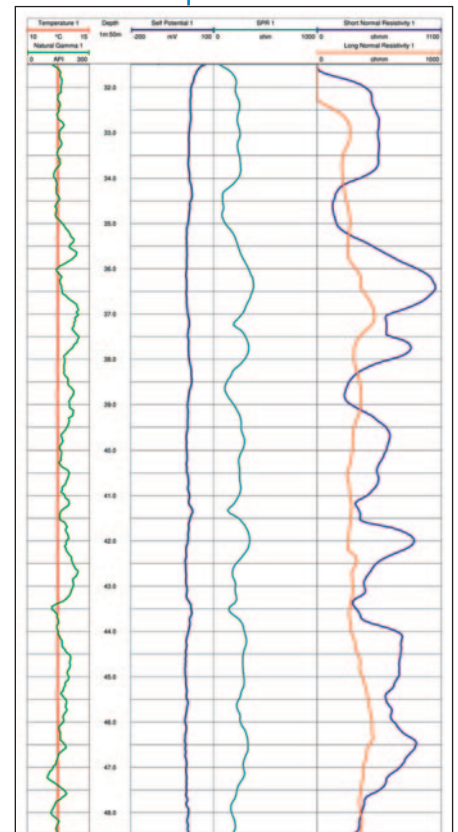
Winches: Robertson Geo designs and builds its own range of winches of varying capacities for deploying subsurface probes on 4-core cable. *See page 18*

RGeo-eye®

The system incorporates RGeo-fast® delivering 1 Megabit/sec communication speed enabling the acquisition of high resolution video feed from downhole (to 3000m) in air or water filled open or cased boreholes while allowing real-time viewing for the surface operative. The camera has auto focus, a frontal LED internal array with adjustable lighting intensity, and a viewing resolution of SVGA (800 x 600) at 25frames/sec. *See page 19*



RGeo-eye® - four-core 3,000m (10,000ft) high speed wireline borehole camera system.



Example of data created by the Electric Log probe.



Water & Environmental Applications

Representative examples to show **Essential**, **Intermediate** and **Advanced** systems as a benchmark for identifying the level of data and interpretation required for individual locations and characteristics.

Robertson Geo support teams are always available for further information and discussion when considering system applications at support@robertson-geo.com

Essential

Exploration

Micrologger2
Winch (Mini)
Electric Log Probe
Temperature Conductivity Probe
and/or
Dual Focussed Induction Probe

Well Inspection

Micrologger2
Winch (Mini)
RGeo-eye®
Temperature Conductivity Probe
Impeller Flowmeter
Water Sampler Probe

Intermediate

Exploration

Micrologger2
Winch (Mini/500m)
Electric Log Probe
Temperature Conductivity Probe
Dual Focussed Induction Probe
Full Waveform Sonic Probe
3-Arm Caliper Probe
Impeller Flowmeter
Water Sampler Probe
RGeo-eye®

Well Inspection

Micrologger2
Winch (Mini/500m)
RGeo-eye®
Temperature Conductivity Probe
Electric Log Probe
Impeller Flowmeter
and/or
Heatpulse Flowmeter
Dual Focussed Induction Probe
Water Quality Probe
Water Sampler Probe

Advanced

Exploration

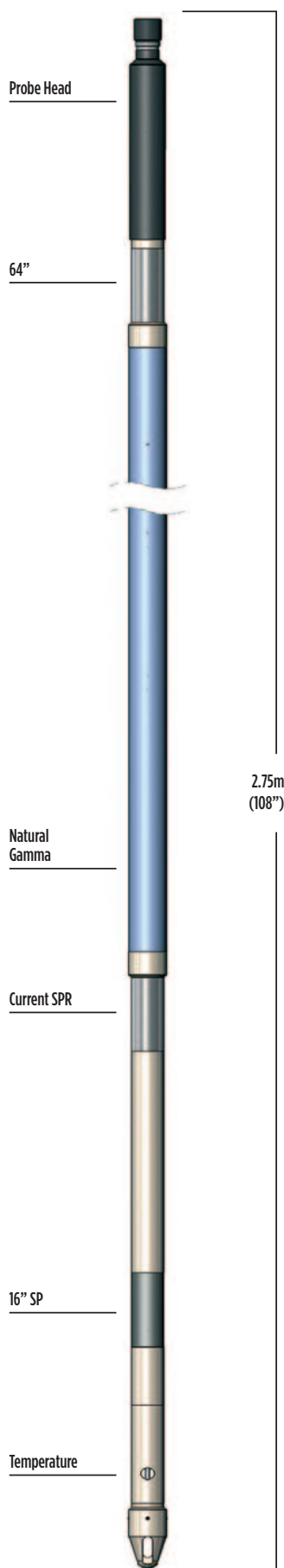
Micrologger2
Winch (Mini/500m/2000m)
Electric Log Probe
Borehole Geometry Probe
Temperature Conductivity Probe
Dual Focussed Induction Probe
Full Waveform Sonic / CBL Probe
Impeller Flowmeter *or* Heat-Pulse Flowmeter
Water Sampler Probe
Dual Neutron Probe
Formation Density Probe
RGeo-eye®

Well Inspection

Micrologger2
Winch (Mini/500m/2000m)
RGeo-eye®
Temperature Conductivity Probe
Electric Log Probe
Impeller Flowmeter
and/or
Heatpulse Flowmeter
Dual Focussed Induction Probe
3-Arm Caliper Probe
Water Quality Probe
Water Sampler Probe
Full Waveform Sonic / CBL Probe

See probe and surface equipment specifications pages 6 through 19

Electric Log



Electric Log Probe

The classic water-well combination probe combining shallow, medium and deep penetrating resistivity measurements with Self-Potential (SP).

Principle of Measurement:

A low-frequency bi-directional electric current from a source electrode on the probe returns through the formation to the cable armour above an insulated bridge. Potentials due to this current flow are measured on various sense electrodes on the probe with respect to a voltage reference 'fish' normally located at the surface. These measurements are converted to apparent formation resistivities within the probe and transmitted to the surface.

SPECIFICATION:

Features

- Digital down-hole measurement avoids errors due to cable effects
- Constant-power down-hole current source

Measurements

- 16" Normal resistivity
- 64" Normal resistivity
- Single-point resistance
- Self-Potential (SP)
- Natural-gamma
- Fluid Temperature
- Optional 8" and 32" Normal resistivity

Applications

- Water
- Determination of water quality
- Indication of permeable zones and porosity
- Minerals/Engineering
- Bed-boundary positions
- Strata correlation between boreholes
- Fracturing Indication

Operating Conditions

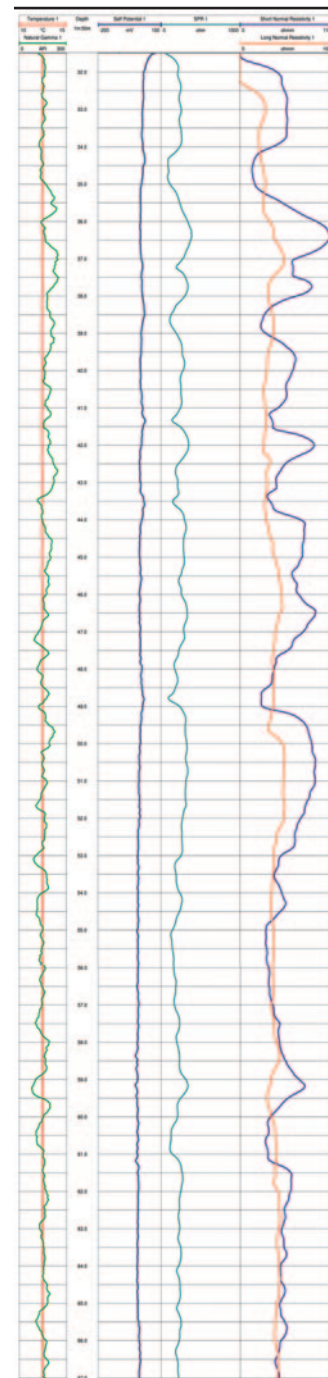
- Borehole type: open-hole, water-filled
- Recommended Logging Speed: 4m per min

Specifications

- Diameter: 45mm
- Length: 2.75m or 3.16m (with 8" and 32" option)
- Weight: 11kg
- Temperature: 0-70°C (extended ranges available)
- Max. pressure: 20MPa
- Resistivity range: 1 to 10,000 ohm-m

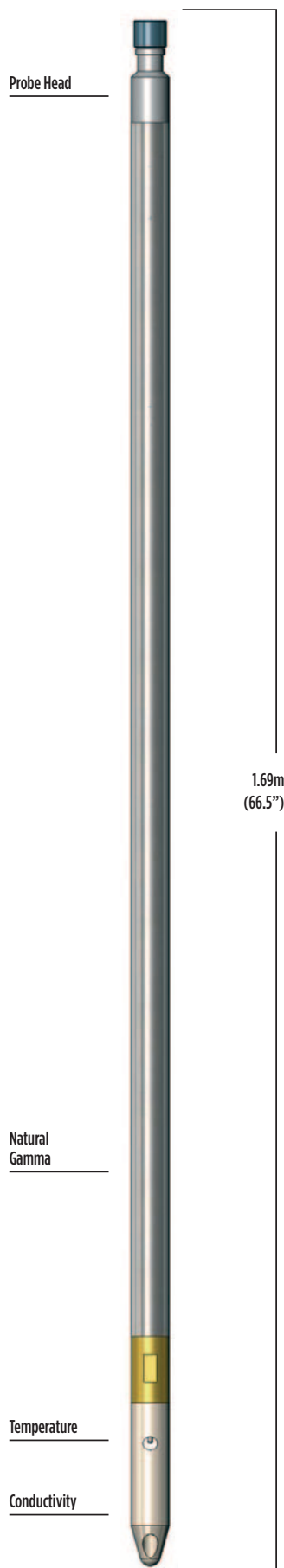
Part Numbers

- I002072 Electric Log probe with natural gamma and temperature
- I002111 - including 8" and 32" normal resistivity



Example of logging data

Temperature Conductivity



Temperature Conductivity Probe

This probe combination provides a continuous, depth-based measurement of fluid temperature and conductivity.

Both parameters can be output in absolute and in differential forms. A natural gamma detector is included for correlation purposes.

Principle of Measurement:

The temperature and conductivity sensors are located in an insulated housing at the base of the probe. During logging, borehole fluid flows freely through ports on the side and base of this housing and over the sensors. The log is recorded downwards while running into the hole to minimise fluid disturbance.

SPECIFICATION:

Features

- Stable, high-quality, semiconductor temperature sensor
- Graphite conductivity electrodes resist corrosion and are easily cleaned

Measurements

- Fluid temperature/differential temperature
- Fluid conductivity/differential conductivity
- Natural Gamma

Applications

Water

- Fluid salinity
- Location of zones of different water quality
- Water-well monitoring
- Identification of zones of in-flow/out-flow
- Temperature gradient
- Water-level determination
- Location of grout behind casing
- Temperature compensation of other logs

Operating Conditions

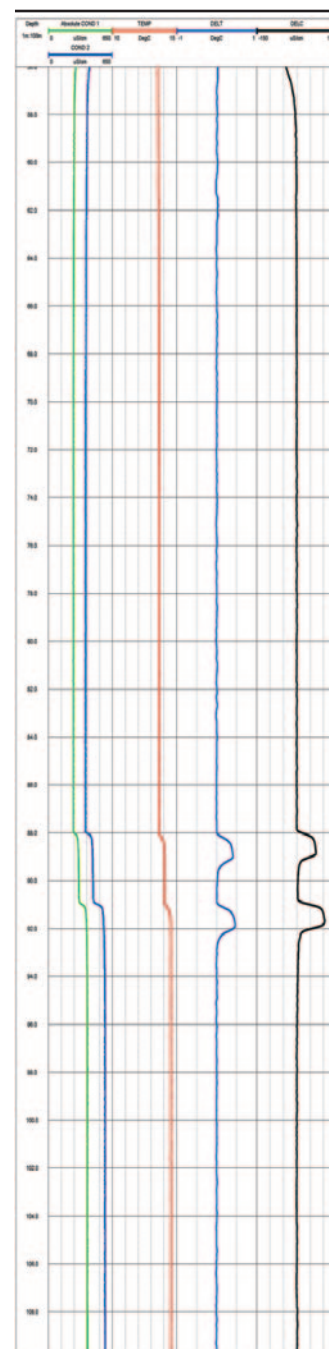
- Borehole type: open/cased holes, water-filled
- Recommended Logging Speed: 5m/min

Specifications

- Diameter: 38mm
- Length: 1.69m
- Weight: 4.5kg
- Temperature: 0-70°C (extended ranges available)
- Max. pressure: 20MPa
- Temp. range: 0-70°C (extended ranges available)
- Conductivity range: 50 to 50,000 $\mu\text{S} / \text{cm}$

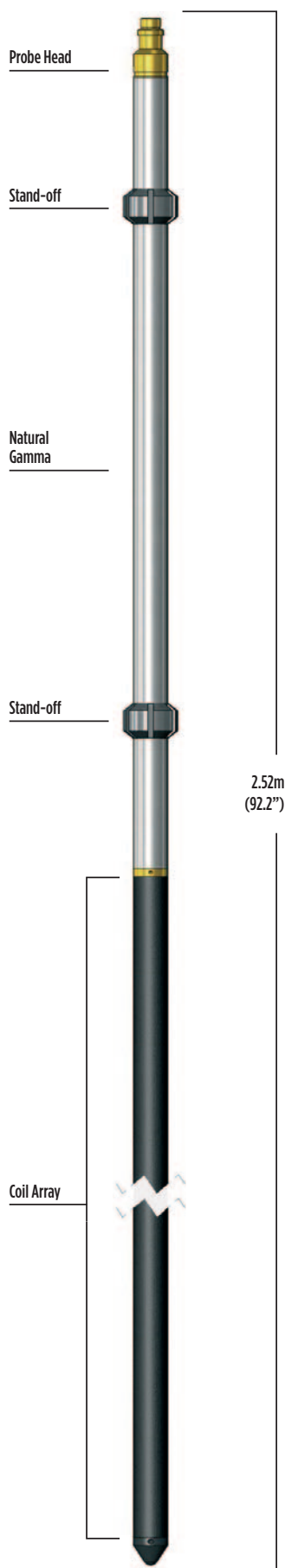
Part Numbers

- 1002055 Temperature Conductivity probe with gamma



Example of logging data

Dual Focussed Induction



Dual Focussed Induction Probe

The Dual Focussed Induction probe provides two simultaneous conductivity logs, corresponding to “medium” and “deep” radii of investigation into the formation.

The two depths of penetration are useful in porous, permeable formations where displacement of formation fluids by drilling mud creates an “invasion zone” with different electrical properties. The 1” focussed induction probe produces a single medium penetration conductivity log. It finds particular application in small-diameter dry or plastic-lined boreholes used for mineral exploration and for conductivity/resistivity in dry holes.

Principle of Measurement:

An oscillating high-frequency magnetic field from a transmitter coil within the probe induces an alternating electrical current within the surrounding conductive formation. This current, in turn, induces voltages within receiver coils proportional to the formation conductivity. The transmitter-receiver spacings determine the depth of investigation of the measurements. Additional focussing coils minimise the contribution of the borehole signal.

SPECIFICATION:

Features

- Formation conductivity measurement in wet/dry boreholes or through plastic casing
- Separate deep and medium penetrating measurements give information on invaded zone
- Focussed measurements for minimum borehole signal PSD (phase-sensitive detector) discriminates between magnetic susceptibility and conductivity signals

Measurements

- Deep formation conductivity
- Medium formation conductivity
- Natural Gamma

Applications

Water

- Indicator of permeable zones and porosity
- Formation water salinity
- Long-term well monitoring

Mineral/Engineering

- Ore identification and quality
- Correlation

Other

- Indication of hydrocarbons

Operating Conditions

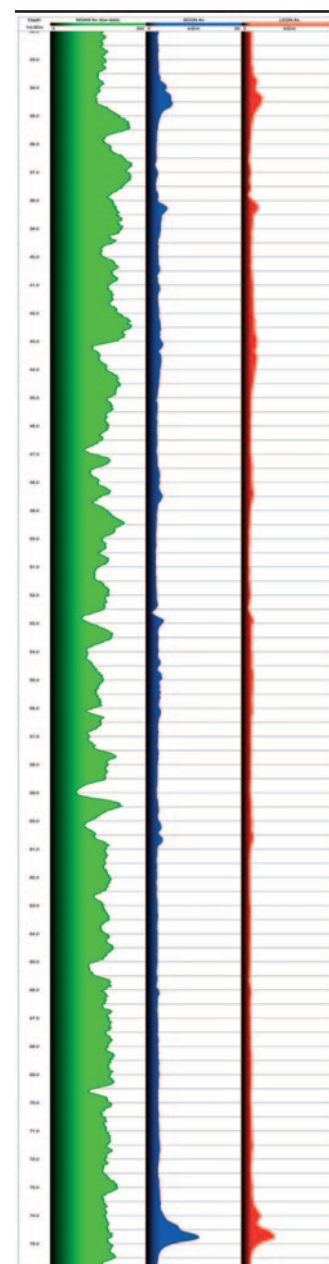
- Borehole type: open/plastic or grp cased, air/water-filled
- Recommended Logging Speed: 5m/min

Specifications

- Diameter: 43mm
- Length: 2.52m
- Weight: 8.6kg
- Temperature: 0-70°C (extended ranges available)
- Max. pressure: 20MPa
- Number of coils: 6 coils: Tx and Ref, Bucking1, Receiver1, Bucking2, Receiver2
- TX-RX spacings: ILM 50cm (20”), ILD 81cm (32”)
- Conductivity range: 3 to 3300mS/m

Part Numbers

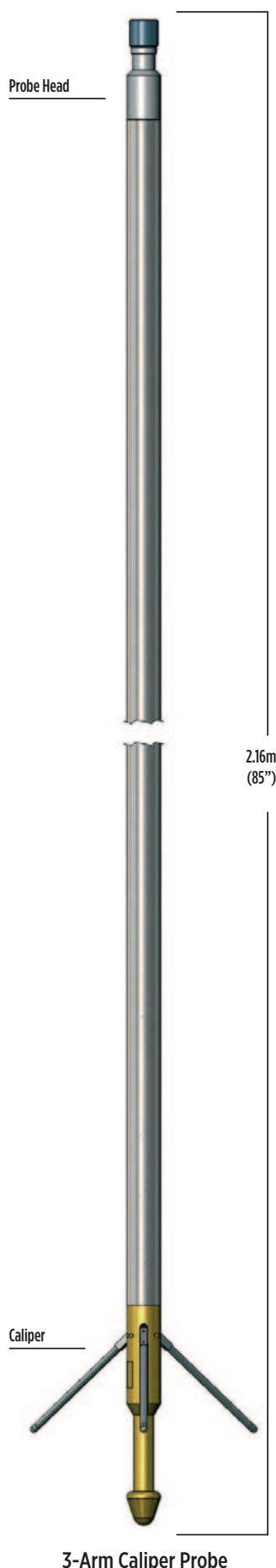
- 1002087 Dual Focussed Induction probe with natural gamma



Example of logging data

3-Arm Caliper

710mm, 1000mm and 1500mm ranges



The 3-Arm Caliper probe provides a single continuous log of borehole diameter as recorded by three mechanically coupled arms in contact with the borehole wall.

710mm, 1000mm and 1500mm range calipers are available to suit a range of well diameters. The caliper is a useful first log to determine the borehole conditions before running more costly probes or those containing radioactive sources.

Principle of Measurement:

Opening and closing of the motor-driver caliper arms is by surface command, allowing the probe to run into the borehole with the arms retracted. Once opened, the spring-loaded arms respond to borehole diameter variations as the probe is raised up the borehole.

SPECIFICATION:

Features

- Small diameter for slim-hole operation
- Extension arms supplied as standard for 38mm version
- Optional natural-gamma measurement
- Optional casing collar locator

Measurements

- CCL (optional)
- Borehole volume (derived)
- Natural Gamma (optional)
- Borehole volume

Applications

- Minerals/Water/Engineering
- Location of borehole collapse or obstructions
- Cement volume calculations for grouting
- Identification of hard and soft lithology
- Location of cracks, fissures, caving, faulting, casing breaks
- Correction of other logs affected by borehole diameter

Operating Conditions

- Borehole type: open/cased; water/air-filled
- Centralisation: recommended in large holes
- Centralisation: recommended in inclined holes
- Recommended Logging Speed: 5m/min

Specifications

- Temperature: 0-70°C (extended ranges available)
- Max. pressure: 20MPa

3-Arm Caliper (710mm range)

- Diameter: 38mm
- Length: 2.18m-2.68m (depending on CCL and extended arms)
- Weight: 7.5kg
- Range: 40-300mm and 40-710mm

3-Arm Caliper (1000mm range)

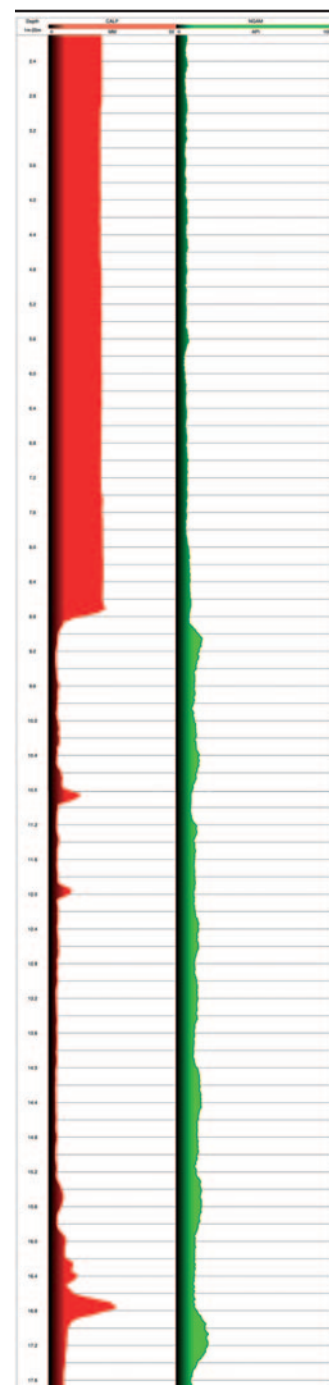
- Diameter: 60mm
- Length: 2.83m
- Weight: 15kg
- Range: 65-1000mm

3-Arm Caliper (1500mm range)

- Diameter: 80mm
- Length: 3.14m
- Weight: 17.5kg
- Range: 100 - 1600mm

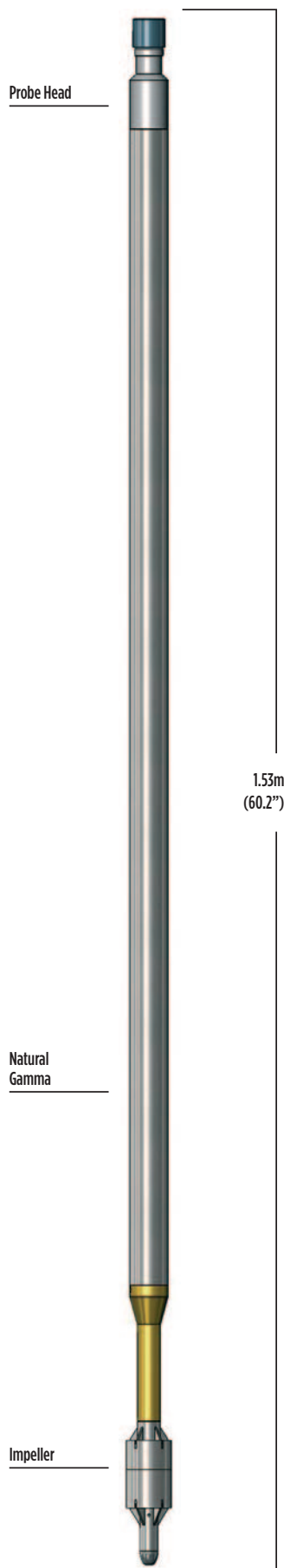
Part Numbers

- 1002035 3-Arm Caliper (710mm range) with arm extension kit and calibrator
- 1002037 – including natural gamma
- 1002041 3-Arm Caliper (1000mm range) with calibrator
- 1002052 3-Arm Caliper (1500mm range)



Example of logging data

Impeller Flowmeter



Impeller Flowmeter Probe

Impellers can detect differential flow rates as low as 1.0m/min.

Logging at a range of speeds allows detection of flow of any rate (although for high precision in low flow rates use of the Heat-Pulse Flowmeter is advised).

Principle of Measurement:

The probes are equipped with lightweight helical impellers mounted on double sapphire bearings. The impellers contain magnets which actuate Hall-effect switches within the probe to detect impeller rotation. Separate log channels record the time of rotation according to fast and slow timebases for improved resolution at high and low flow rates. Uphole and downhole rotations are distinguished within the probe.

SPECIFICATION:

Features

- Jewelled bearings for minimum friction
- Low-drag sensors
- Choice of head diameters
- Cable-speed readout

Measurements

- Flow
- Cable velocity
- Optional natural gamma

Applications

Water

- Flow measurement within a water well
- Location of permeable zones
- Casing leak detection

Operating Conditions

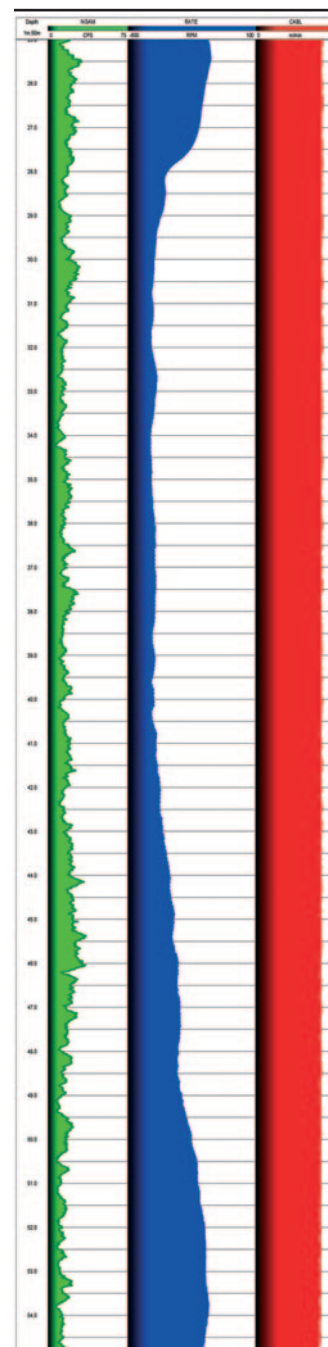
- Borehole type: open/cased, water-filled
- Centralisation: required
- Recommended Logging Speed: Multiple passes, varied speeds 2-7 m/min

Specifications

- Diameter: 45mm, 70mm
- Length: 1.53m
- Weight: 4.0kg
- Temperature: 0-70°C (extended ranges available)
- Max. pressure: 20MPa

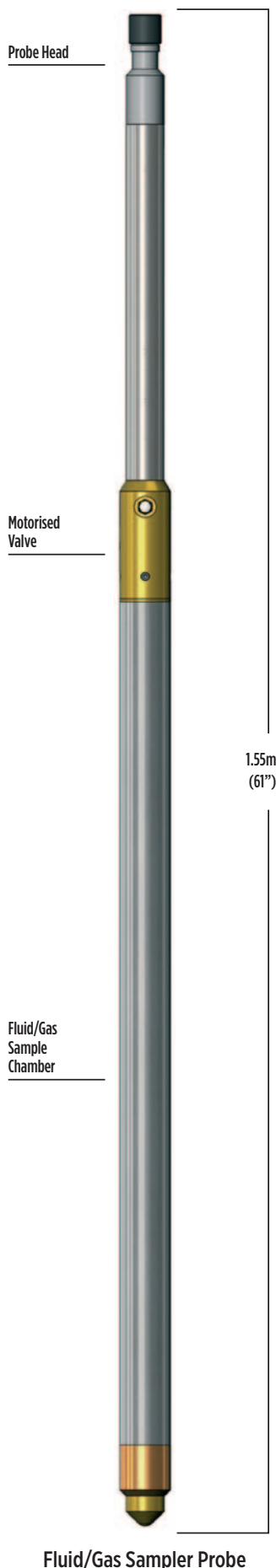
Part Numbers

- I002122 Impeller Flowmeter 45mm
- I002115 Impeller Flowmeter 70mm



Example of logging data

Fluid/Gas Sampler



Fluid and Gas Sampler probes are used to take a discrete sample of well fluid at a particular depth and to return it uncontaminated to the surface.

Principle of Measurement:

Fluid Sampler: The Fluid Sampler includes a chamber incorporating motor-actuated valves at the top and base. While the probe is being lowered into the borehole, the valves are held open, allowing well fluid to flow freely through the chamber. At the desired depth, the motor is activated under surface control, closing the valves to seal the chamber and contents ready for retrieval.

Gas Sampler: The Gas Sampler is designed to retrieve uncontaminated samples of well fluids comprising or containing gas whilst maintaining the original well pressure. The probes contain a sealed sample chamber with a moveable piston and motor-actuated valve. Prior to logging, the piston is withdrawn manually and locked into position, leaving a partial vacuum within the sample chamber. For sampling, the valve is opened under surface control, allowing the well fluid to enter the chamber. The valve is then closed, enclosing the sample under ambient pressure. At the surface, the fluid can be transferred while still under pressure to a suitable container for analysis.

SPECIFICATION:

Features

- Simple, motor-operated actuation
- Fluid sample chamber easily cleaned
- Fluid/gas sample retained at borehole pressure

Applications

Fluid

- Sampling well fluid at depth for surface analysis
- Groundwater and water well studies

Operating Conditions

- Borehole type: open/cased, water-filled
- Recommended Logging Speed: Static sampling

Specifications

Fluid Sampler

Volume: 0.25L	Diameter: 38mm	Length: 0.96m	Weight: 5kg
Volume: 0.5L	Diameter: 38mm	Length: 1.27m	Weight: 5kg
Volume: 1.0L	Diameter: 38mm	Length: 1.88m	Weight: 5kg
Volume: 1.25L	Diameter: 38mm	Length: 2.19m	Weight: 5kg
Temperature:	0-70°C (extended ranges available)		
Max. pressure:	20MPa		

Gas Sampler

Volume: 0.5L	Diameter: 51mm	Length: 1.18m	Weight: 10kg
Volume: 1.0L	Diameter: 51mm	Length: 1.55m	Weight: 10kg
Temperature:	0-70°C (extended ranges available)		
Max. pressure:	20MPa		

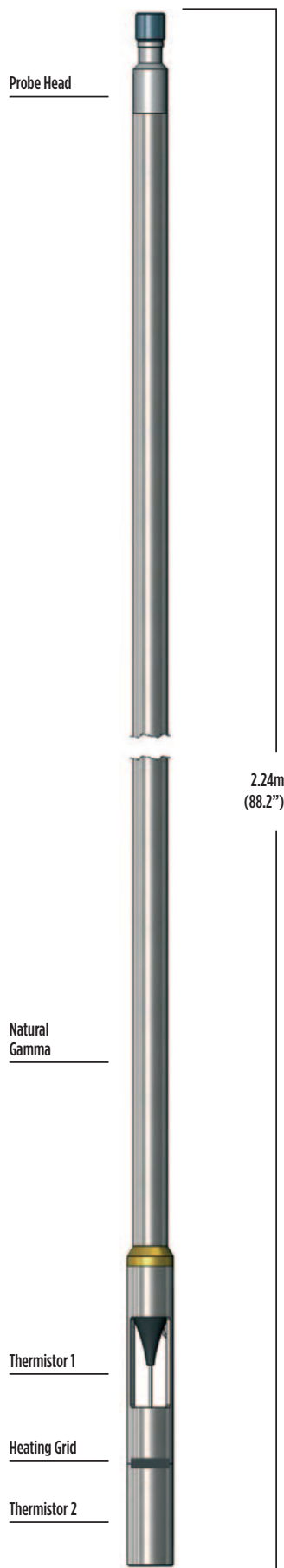
Part Numbers

1002198	Fluid Sampler probe 1li
1002206	Gas Sampler probe 1li



Mechanical valve assembly where the sample is extracted

Heat-Pulse Flowmeter



Heat-Pulse Flowmeter Probe

The Heat-Pulse Flowmeter probe is used to detect low vertical flows within a borehole below the threshold limits of conventional impeller tools.

The probe is designed for stationary measurements only. Normal logging practice involves measurements at a series of depths across the zone of interest.

Principle of Measurement:

The probe contains a horizontal wire-grid heating element and thermistors located above and below it. Apertures in the tool permit the free flow of well fluid through the assembly. Pulses of electric current are applied to the heating grid under surface command, warming fluid in the vicinity of the grid. The warm fluid front migrates towards the thermistors where it is detected. Depending on the direction of flow, either upper or lower thermistor detects the warm fluid front first. The time taken to reach the detector gives an indication of flow rate.

SPECIFICATION:

Features

- Detection of very low vertical flow rates
- Auto-null command cancels tool offsets prior to each measurement

Measurements

- Up/down flow

Applications

Water

- Location of permeable zones in water wells
- Casing leak detection

Operating Conditions

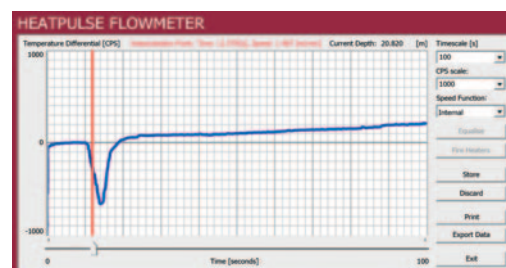
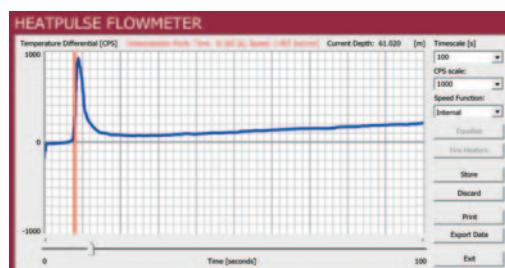
- Borehole type: open/cased hole, water-filled
- Centralisation: required
- Recommended Logging Speed: static measurements

Specifications

- Diameter: 51mm
- Length: 2.24m
- Weight: 8.0kg
- Temperature: 0-50°C
- Max. pressure: 20MPa
- Measurement range: 0.1 to 3m/min

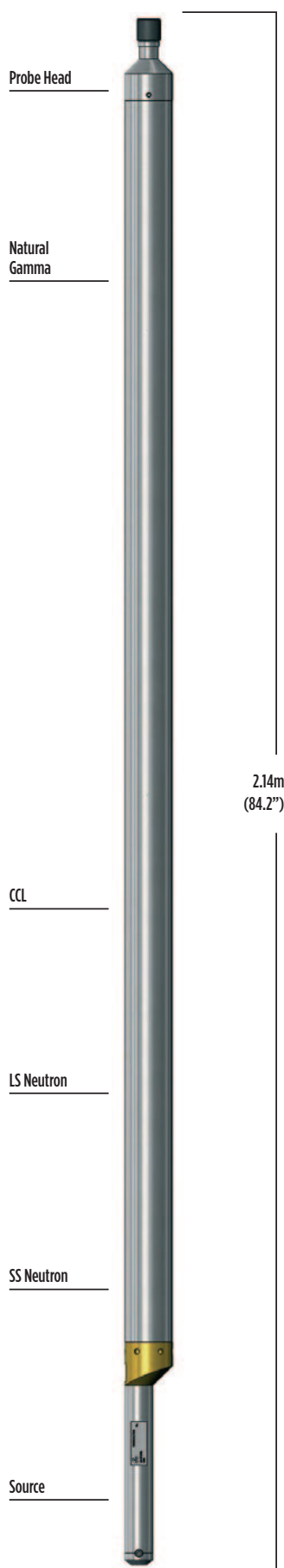
Part Numbers

- I002119 Heat-Pulse Flowmeter probe



Examples of logging data

Dual Neutron



Dual Neutron Probe

The Dual Neutron probe provides a calibrated borehole-compensated neutron porosity measurement in mud-filled open holes.

It is the probe of choice for quantitative formation-fluid studies.

A single-detector neutron probe is also available for qualitative porosity logging under most borehole conditions including through steel or plastic casing and drill-pipe.

Principle of Measurement:

The Dual Neutron measurement uses two ^3He proportional detectors and a detachable, sealed $^{241}\text{Am-Be}$ neutron source. Fast neutrons emitted by the source are scattered and slowed to thermal levels, principally by hydrogen in the formation. The ratio of the neutron flux reaching the near and far detectors depends on the hydrogen index and porosity. Use of dual detectors and a ratio method provides a porosity measurement compensated for borehole diameter but not independent of it.

SPECIFICATION:

Features

- Real-time porosity measurement
- Compensation for borehole diameter

Measurements

- Compensated porosity
- Neutron (raw counts)
- Natural gamma
- Option: Casing-collar locator (CCL)

Applications

Minerals / Water / Engineering

- Lithology identification
- Location of aquifer and aquitard
- Fracture analysis in coals
- Correlation between open and cased-hole logs
- Strata correlation between wells

Operating Conditions

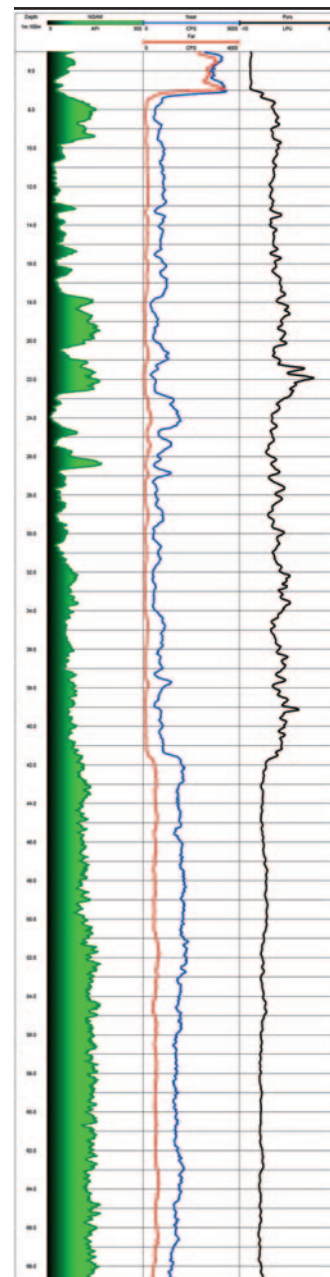
- Borehole type: open/cased, water-filled
- Centralisation: ex-centralised with bowspring
- Recommended Logging Speed: 4m/min

Specifications

- Diameter: 65mm
- Length: 2.14m
- Weight: 19.5kg
- Temperature: 0-70°C (0-125°C optional)
- Max. pressure: 20MPa
- Range: 15 to 45% Limestone Porosity Units (LPU)

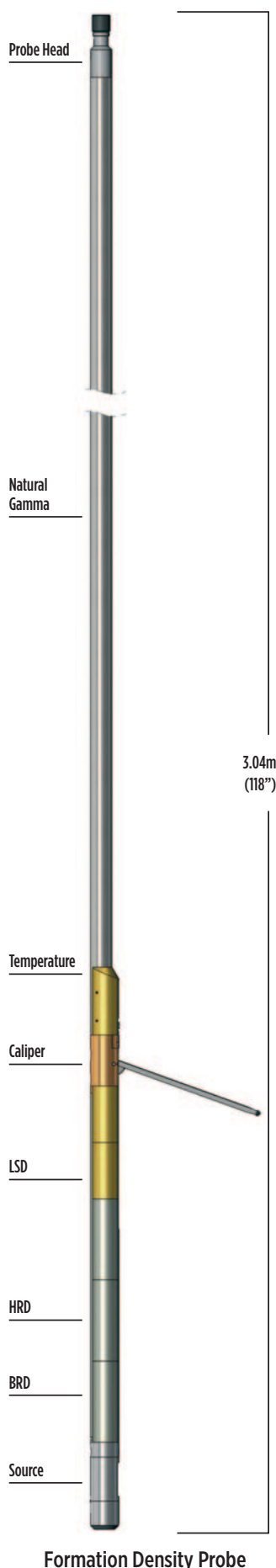
Part Numbers

- 1002029 Dual Neutron probe with natural gamma
- 1002030 - includes CCL



Example of logging data

Formation Density, Density Guardlog & Iron Ore Density



The Formation Density probe uses dual shielded detectors to provide a borehole-compensated density measurement with good bed-boundary resolution.

The Density Guardlog probe offers an additional LL3 focussed electrical measurement with good vertical resolution and depth of investigation. The Iron Ore Density probe includes extra collimation, different source-detector spacings and a higher activity source to extend the density range to 5g/cc for iron ore logging.

Principle of Measurement:

The probes contain a detachable ^{137}Cs gamma source and two scintillation gamma detectors. The active windows of the source and detectors are maintained in contact with the borehole wall by a motorised caliper arm. Gamma radiation back-scattered by the formation (Compton effect) reaches the detectors where the relative count rates provide a measure of formation density.

SPECIFICATION:

Features

- Compensated density output in engineering units (g/cc)
- Short-spacing detector for high vertical resolution
- Tungsten shielding reduces borehole effects
- Standard calibration blocks for field or base use

Measurements

- Bulk density
- High-resolution density (HRD)
- Natural gamma
- Caliper
- Options: Guard resistivity, Bed-resolution density (BRD), Temperature
- Dual calibrated density channels
- Fluid Temperature

Applications

Minerals:

- Density and porosity
- Lithology
- Bed thickness and boundary location
- Coal ash and moisture content

Engineering:

- Rock strength and elasticity parameters (with sonic log)
- Detection of weathered or fractured zones

Water:

- Location of aquifer and aquitard
- Detection of cavities and missing cement

Operating Conditions

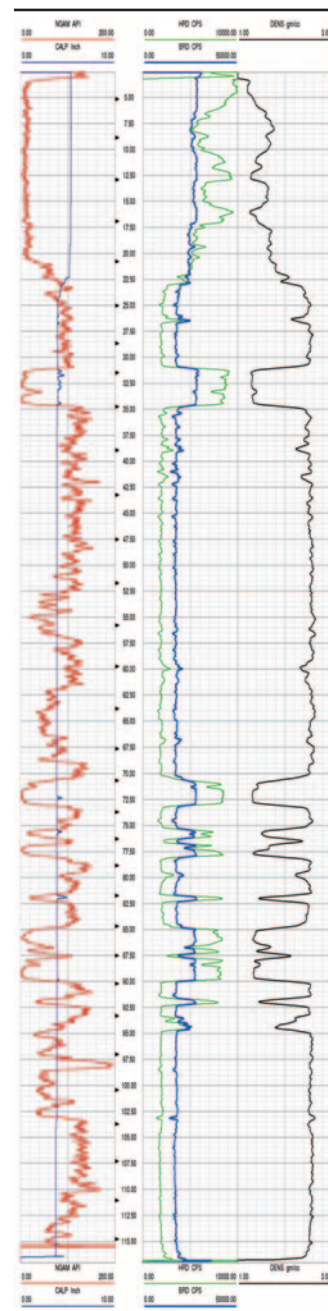
- Borehole type: All, including air filled (qualitative measurement only)
- Recommended Logging Speed: 4m/min

Specifications

- Diameter: 51mm
- Length: Formation Density 3.04m / Density Guardlog 2.89m
- Weight: 21kg (Density Guardlog 28.5kg)
- Temperature: 0-70°C (extended ranges available)
- Max. pressure: 20MPa
- Density range: 1.1 to 2.95g/cc (Formation Density and Density Guardlog probes)
1.5 to 5.0g/cc (Iron Ore Density probe)
- Caliper range: 50mm to 300mm
- Resistivity range: 1-10000 ohm-m

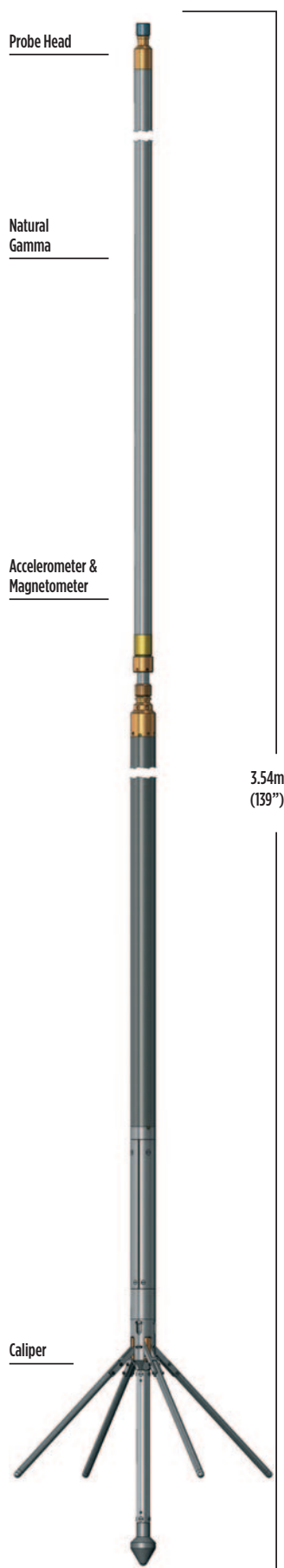
Part Numbers

- I002013 Formation Density probe
- I002016 – includes BRD and temperature
- I014720 Density Guardlog probe with BRD
- I018309 Iron Ore Density probe



Example of logging data

Borehole Geometry



Borehole Geometry Probe

The Borehole Geometry probe consists of a 4-arm caliper combined with a verticality measurement.

The probe can replace the 3-Arm Caliper (710mm range) with advantage where the borehole cross-section departs from circular and where directional information is required for well-completion studies and formation stress analysis. The top section can be logged as a standard verticality.

Principle of Measurement:

The XY caliper provides continuous measurements of borehole diameter from two independent pairs of linked arms. The verticality section includes a triaxial magnetometer and three accelerometers. Data from these are combined by a downhole microprocessor to provide real-time, continuous logs of probe orientation and borehole inclination and direction.

SPECIFICATION:

Features

- Sensitive X-Y caliper
- Continuous orientation log for all borehole inclinations

Measurements

- X and Y calipers
- Borehole deviation and drift
- Borehole volume (derived)
- True vertical depth (TVD)
- Natural gamma

Applications

- Water/minerals/engineering
- Borehole diameter in two axes
- Borehole break-out for stress analysis
- Cracks, fissures and casing defects

Operating Conditions

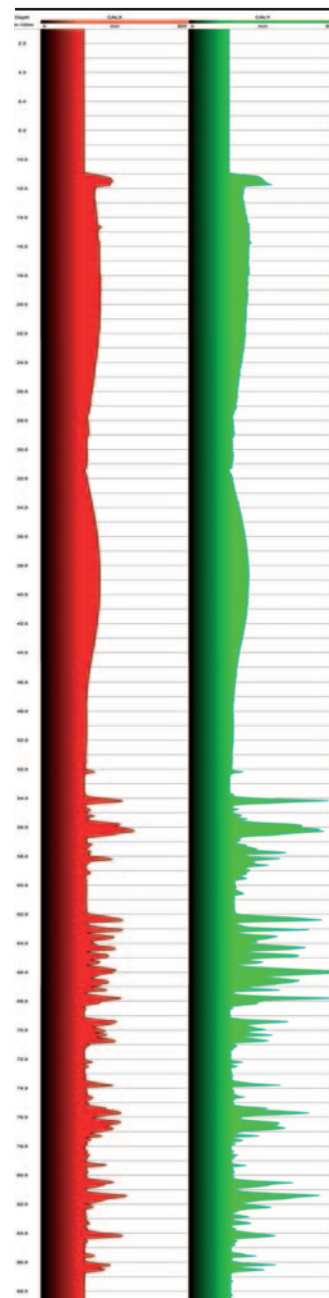
- Borehole type: open/cased, water/air-filled
- Centralisation: recommended, non-magnetic centralisers required
- Recommended Logging Speed: 5m/min

Specifications

- Diameter: 60mm
- Length: 3.54m (in two sections) or 1.81m
- Weight: 19.5kg complete (5.5kg for top section)
- Temperature: 0-70°C (extended ranges available)
- Max. pressure: 20MPa
- Caliper range: 75mm to 700mm

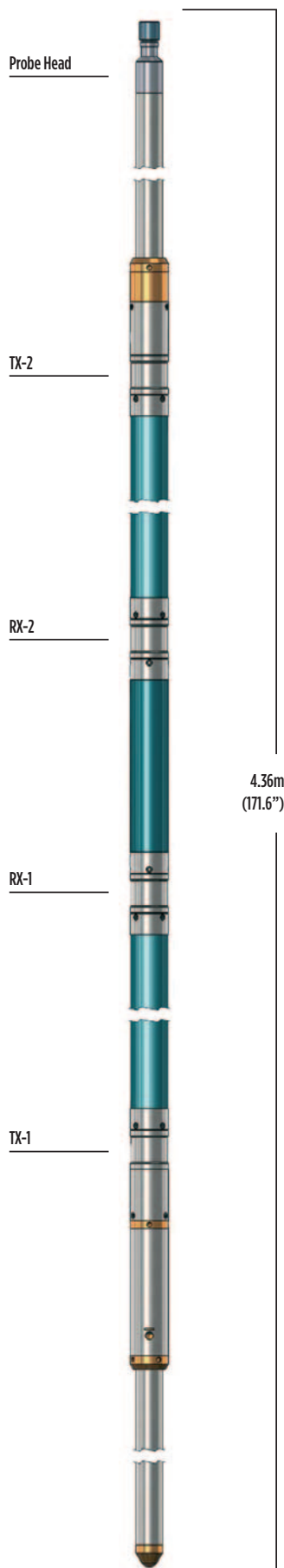
Part Numbers

- 1002044 Borehole Geometry probe with natural gamma



Example of logging data

Full Waveform Sonic



Full Waveform Sonic Probe

The Full Waveform Sonic probe uses a dual-transmitter dual-receiver array to provide high quality formation acoustic-velocity data.

Options are available for display of full-waveform data and cement-bond data (CBL) in cased boreholes.

Principle of Measurement:

A piezoelectric transmitter stimulated by a high-voltage pulse radiates a high-frequency acoustic wavelet. This is coupled via the borehole fluid and formation to each receiver. An accurate quartz clock measures the first arrival transit time. The first arrival in open hole corresponds to the p-wave path in the formation.

Full Waveform Sonic mode: Two pairs of transmitters and receivers are used to allow cancellation of the borehole fluid path and determination of formation velocity (slowness). The full sonic waveform from both receivers is displayed as a variable-density log (VDL) or waveform ('wiggles') trace.

Cement Bond Log (CBL) mode: The probe records the amplitude and arrival time of the first casing arrival at the near receiver and full sonic waveforms from both receivers.

GeoCAD® Sonic Module: This optional package allows shear wave slowness processing from the full waveform data. These can be combined with additional density data to determine elastic moduli. First arrivals and waveform amplitudes can also be determined by the CBL function to provide cement bond quality reports.

SPECIFICATION:

Features

- Down-hole digitisation of waveform data
- Compensation for poor centralisation or caving
- Variable density log (VDL) or wavelet ('wiggles') display

Measurements

- Formation velocity (slowness)
- Shear (S) velocity (where shear wave exists)
- Full waveform Time of first arrival (delta-t)
- Amplitude of first arrival (CBL)
- Integrated transit time
- Natural Gamma optional

Applications

Water / Minerals / Engineering

- Porosity
- Rock strength and elasticity (with density log)
- Correction of seismic velocity
- Fracture and permeability indication in hard rock
- Location of poor or missing cement behind casing

Operating Conditions

Borehole type:

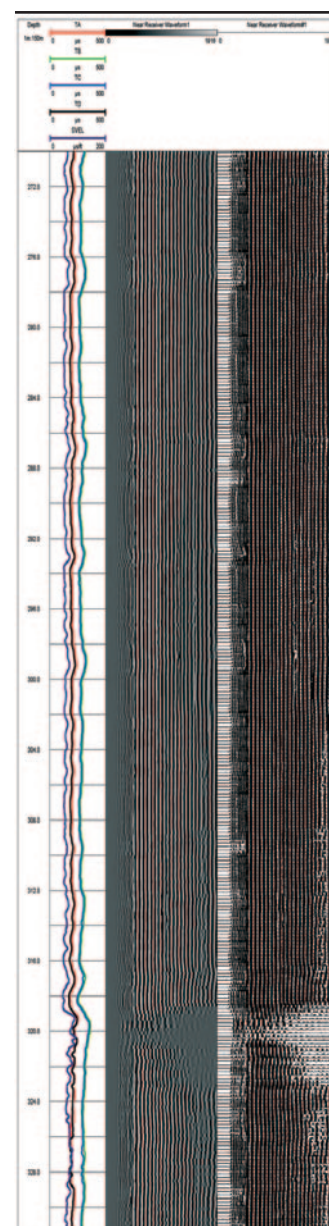
- Sonic: open-hole, water-filled
- CBL: cased-hole, water-filled
- Centralisation: required
- Recommended Logging Speed: 4m/min

Specifications

- Diameter: 60mm
- Length: 4.36m (4.78m with gamma)
- Weight: 30kg (33kg with gamma)
- Temperature: 0-70°C (extended ranges available)
- Max. pressure: 20MPa

Part Numbers

- 1002128 Full Waveform Sonic probe with CBL
- GeoCAD® Sonic Module
- 1020983 GeoCAD® Sonic Module



Example of logging data

Micrologger2 | Winlogger Software

Micrologger2

Micrologger2 is the surface interface system for handling logging data acquisition. It supports all Robertson Geo probes including acoustic and imaging tools.

Compact and lightweight Micrologger2 is probably the most powerful portable logging system around and with over 600 units used around the globe it has a proven record for its reliability and technology.

SPECIFICATION:

Features

Logging

Supports Robertson Geo and many third-party probes

USB high-speed link to PC Compatible with most winches/cables

Real-time data display and printing

Supports Windows™ printers

Data output in LAS and Robertson Geo formats

Modular construction for easy field maintenance

Part Numbers

I000184	Robertson Geo USB Micrologger2
---------	--------------------------------

1000204	110/220VAC power supply for ML2 and winch (up to 500m)
---------	--

1000197	Canvas bag for Micrologger2
---------	-----------------------------

I013689	Robertson Geo Micrologger2 (video capability installed)
---------	---

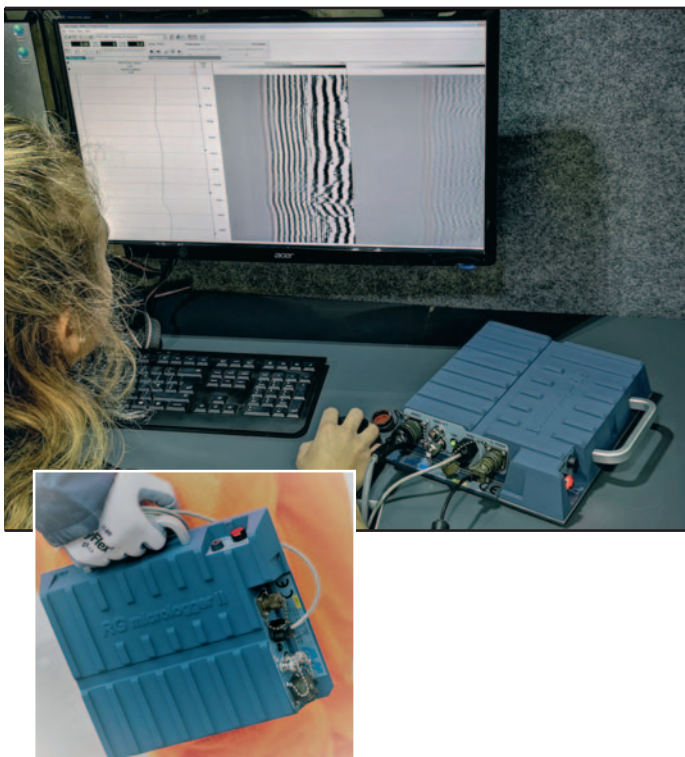
I000192	Micrologger2 12V PSU (Black Box)
---------	----------------------------------

I000211	Notebook PC using latest Windows software
---------	---

I000213	Semi-Ruggedised notebook PC using latest Windows software
---------	---

I014942	Fast Thermal Printer for continuous plots (Desk Top)
---------	--

I014946	Fast Thermal Printer for continuous plots (Rack Mounted)
---------	--



Winlogger Software

Winlogger is the MS Windows based operating system for the Micrologger2, providing field acquisition capability, processing and reporting for the full range of Robertson Geo probes.

It is easy to operate, retaining a standard Windows™ look using familiar tool bars and drop-down menus for all frequently needed functions.

The package incorporates powerful features including a built-in compiler to allow the more advanced user to construct custom 'User Functions' to process multichannel data in real time during logging.

Robertson Geo Winlogger is supplied with a multi-user licence allowing free distribution of the software to any user of Robertson Geo log data.

This policy has proved popular with wireline service companies who may provide Winlogger to clients to allow them to replay or reprocess data in-house without resorting to 3rd-party packages.

SPECIFICATION:

Features

Support for all Robertson Geo digital slim-hole probes

Screen/printer log display in calibrated engineering units

Selectable depth sample interval (1, 2, 5, 10 cms etc)

Metric and imperial logs in API format

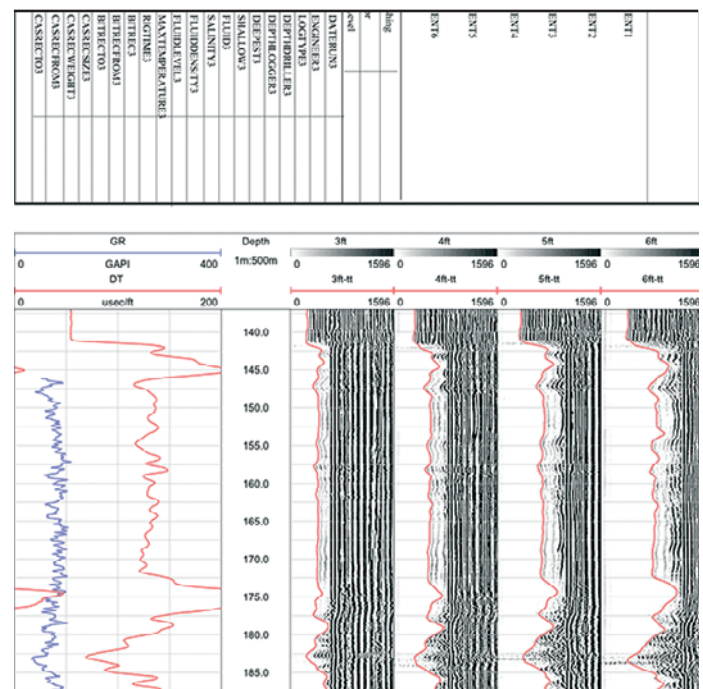
Custom logos and headers Data export in ASCII (LAS) format

Compatible with Windows 10 and earlier OS

Part Numbers

1000466

Winlogger software



Mini Winch | 500m Winch | 2000m Winch

Robertson Geo designs and builds its own range of winches of varying capacities for deploying subsurface probes on 4-core cable.

Each winch is precision engineered for reliable use in the most challenging field applications. The winches are fully compatible with the Micrologger2 surface system and the full range of Robertson Geo probes, for depths of up to 2,000m.

Mini Winch

The Robertson Geo Mini Winch is portable, compact and robust. Its basic 'no-frills' design is aimed at long-term reliability under arduous conditions.

SPECIFICATION:

Specifications

Capacity:	175m (575') 4.72, (3/16") cable
Speed:	0 – 17.5m/min (0 – 57ft/min) on full drum (12VDC operation)
Motor:	550W (12 – 24VDC)
Size:	340(w) x 400(l) x 320(h) mm
Weight:	19kg excluding cable

Part Numbers

I013754	Mini Winch includes power and data cables
I001117	Mini Winch Tripod with Encoder



500m Winch

A robust heavy-duty unit, the 500m Winch can be operated from a vehicle battery and is ideal for heavier probes in shallow boreholes.

SPECIFICATION:

Specifications

Capacity:	530m (1738') 3/16" 4-core cable
Speed:	0 – 13m/min (0 – 43ft/min)
Motor:	180W at 12VDC
Size:	582(w) x 482(l) x 414(h) mm
Weight:	52kg excluding cable

Part Numbers

I001019	500m winch including tripod, power and data cable
---------	---



2000m Winch

The standard unit for truck-mounted operations in deep boreholes, the 2000m winch includes an integral depth wheel and an automatic level wind.

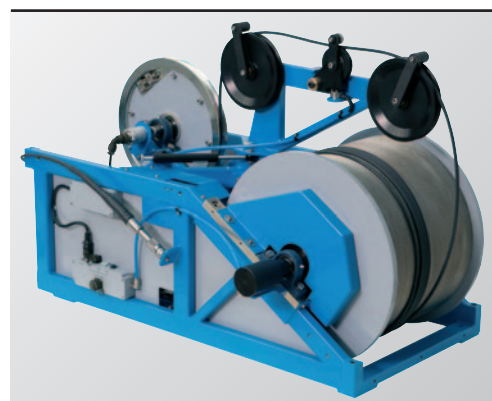
SPECIFICATION:

Specifications

Capacity:	2030m (6658') 3/16" 4-core cable
Speed:	0 – 30m/min (0 – 99ft/min)
Motor:	2hp (1.5kW) at 110/220VAC
Size:	605(w) x 1060(l) x 735(h) mm
Weight:	142kg excluding cable

Part Numbers

I018194	2000m winch for 3/16" 4-core cable includes tripod, power and data cable
---------	--



RGeo-eye® | Four-core 3,000m (10,000ft) high speed wireline borehole camera system



RGeo-eye®



RGeo-eye® is a slimline full colour downward view camera, operating on a 4-core or coaxial cable at a high transmission rate and is fully compatible with existing Robertson Geo winches and surface systems. Application software supplied with the system enables control of camera functionality and real time deep subsurface video feed for the operative.

This is an innovative development of downhole camera use and availability for the geophysical data acquisition markets. The RGeo-eye® camera, an in-house design and build system by Robertson Geo, is fully backed by a technical resource that only a proven original equipment manufacturer can provide.

It provides a deep subsurface range of 3,000m (10,000ft), operates on industry standard 4-core or coaxial wireline cable and offers pressure ratings to 5000 psi with a minimum 75°C temperature rating.

SPECIFICATION:

Applications

- Borehole and casing integrity inspection
- Surveillance of mines, shafts, caverns and voids
- Assessment of deep concrete piles
- Pre-logging borehole examination
- Damage detection in subsurface structures

Operating Conditions

Borehole Type:	Air / water-filled; open hole or cased hole
Recommended Logging Speed:	2 - 5m/min
Depth rating:	3,000m / 4-core cable

Specifications

Diameter:	43mm
Length:	1,170mm
Weight:	5kgs
Communication rate:	RGeo-fast® 1 Megabit/sec
Resolution:	25 frames per sec SVGA (800x600)
'Snapshot' mode:	high resolution still image at UXGA (1600 x 1200)
Max temperature:	75°C (high temp versions coming soon)
Max pressure:	5,000 psi
Autofocus	
Frontal LED internal array, with adjustable lighting intensity	
Additional lighting options for large diameter voids	

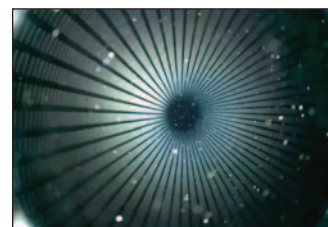
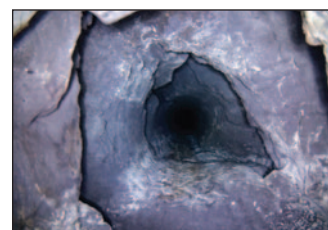


CE compliant

Recommended minimum computer specification:
i7 7700 processor with 16GB of memory running Intel HD Graphics 630 card running Windows 10 64-bit

Part Numbers

I020263	GeoEye Digital Camera (1,000m)
I020408	GeoEye Digital Camera (2,000m)
I020409	GeoEye Digital Camera (3,000m)
I020412	Custom Peli Case for RGeo-eye® Camera
I020264	GeoEye Centraliser 76-110mm
I020265	GeoEye Centraliser 90-1800mm
I020266	GeoEye Centraliser 180-260mm
I020267	GeoEye Sinker Bar



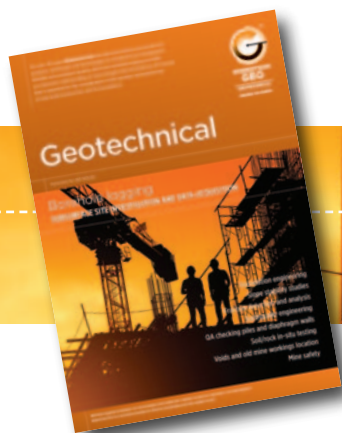
The system incorporates RGeo-fast® delivering 1 Megabit/sec communication speed enabling the acquisition of high resolution video feed from downhole (to 3000m) in air or water filled open or cased boreholes while allowing real-time viewing for the surface operative.

The camera has auto focus, a frontal LED internal array with adjustable lighting intensity, and a viewing resolution of SVGA (800 x 600) at 25frames/sec.

The acquisition software supplied with RGeo-eye® allows screen shots to be captured and text editing whilst viewing/recording. Where more detail is required, full colour 'snapshot' images can also be captured at 1600 x 1200

First release of the RGeo-eye® camera is rated at 75°C (high temp versions coming soon).

Our complete range of brochures:



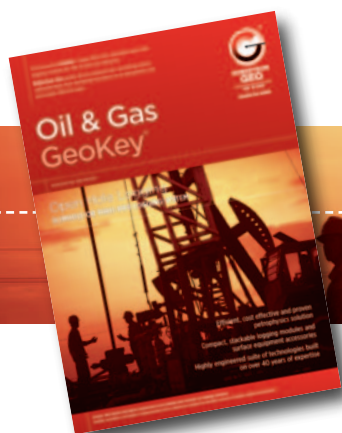
Geotechnical

SUBSURFACE SITE INVESTIGATION AND DATA ACQUISITION



Mining & Minerals

SUBSURFACE RESOURCE EXPLORATION AND MINE SAFETY PLANNING



Oil & Gas GeoKey®

SLIMHOLE OR THRU-PIPE OPEN HOLE LOGGING SYSTEM



Renewables

SUBSURFACE DATA ACQUISITION AND CHARACTERISATION



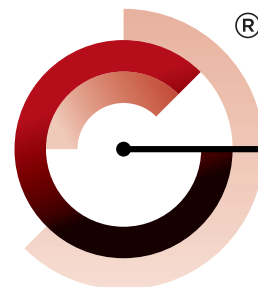
Water & Environmental

SUBSURFACE CHARACTERISATION AND DATA ACQUISITION



Operational Services

COMPREHENSIVE GROUND INVESTIGATION SERVICES, DATA MANAGEMENT AND RENTAL SOLUTIONS



**ROBERTSON
GEO**

Unlocking Your GeoData

Robertson Geologging Ltd.

Deganwy, Conwy, LL31 9PX,
United Kingdom

T: +44 (0) 1492 582 323

Sales & Corporate

E: growlands@robertson-geo.com

Operational Services

E: ijones@robertson-geo.com

Robertson Geologging (USA) Inc.

55 W Hoover Ave, Suite 9, Mesa,
AZ 85210, USA

T: +1 (480) 427 2559

E: sstroud@robertson-geo.com

Robertson Geologging (Asia) Inc.

Flat 21A, Village Tower, 7 Village Road,
Happy Valley, Hong Kong

T: +852 650 33486

E: steveparry@robertson-geo.com

www.robertson-geo.com



ISO 9001
Certified
Quality Management System

www.tuv-sud.com/ms-cert

Copyright Robertson Geologging Ltd
© all rights reserved.