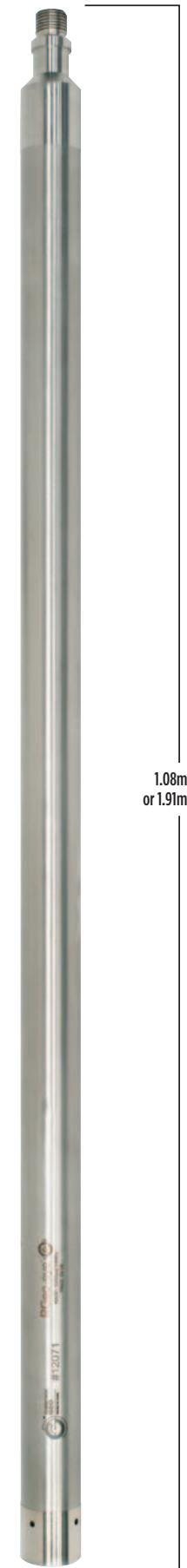


## PROBES

### RGeo-EYE® DOWNHOLE CAMERA



RGeo-eye®

RGeo-eye® is a slimline full colour downward view camera, operating on a 4-core or coaxial cable at a high transmission rate and is fully compatible with existing Robertson Geo winches and surface systems. Application software supplied with the system enables control of camera functionality and real time deep subsurface video feed for the operative.

This is an innovative development of downhole camera use and availability for the geophysical data acquisition markets. The RGeo-eye® camera, an in-house design and build system by Robertson Geo, is fully backed by a technical resource that only a proven original equipment manufacturer can provide.

It provides a deep subsurface range of 3,000m (10,000ft), operates on industry standard 4-core or coaxial wireline cable and offers pressure ratings to 5000 psi with a minimum 75°C temperature rating.



#### SPECIFICATION:

##### Applications

- Borehole and casing integrity inspection
- Surveillance of mines, shafts, caverns and voids
- Assessment of deep concrete piles
- Pre-logging borehole examination
- Damage detection in subsurface structures

##### Operating Conditions

|                            |  |
|----------------------------|--|
| Borehole Type:             | Air / water-filled; open hole or cased hole        |
| Recommended Logging Speed: | 2 - 5m/min   |
| Depth rating:              | 3,000m on 4-core cable or 1,000m on coaxial cable* |

##### Specifications

|  |  |
|--|--|
| Diameter:  | 43mm   |
| Length:  | 1.08m, or 1.91m with sinker bar  |
| Weight:  | 5kgs   |
| Communication rate:  | RGeo-fast® 1 Megabit/sec   |
| Resolution:  | Up to 30 frames per sec SVGA (800x600)<br>or (600 x 600) - User selectable |
| 'Snapshot' mode:   | high resolution still image at UXGA (1600 x 1200)                          |
| Standard temperature rating:                                   | 0-90°C at 5000psi (3000m) - 1,000m, 2,000m and 3,000m versions available   |
| Max pressure:  | 5000 psi (3,000m)  |
| Autofocus  |  |
| Frontal LED internal array, with adjustable lighting intensity |  |
| Light output:  | 6 x 282lm @ 3,000K LEDs  |
| Additional lighting options for large diameter voids           |  |



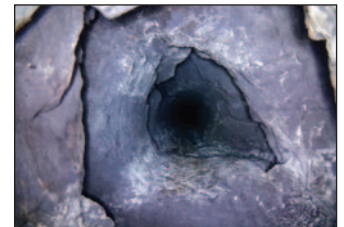
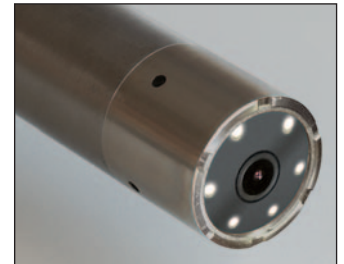
CE Certified and manufactured within an ISO9001:2015 quality system

Recommended minimum computer specification:  
i7 7700 processor with 500GB SSD, 16GB of memory running Intel HD Graphics 630 card running Windows 10 64-bit

##### Part Numbers

|         |                                       |
|---------|---------------------------------------|
| 1020263 | GeoEye Digital Camera (1,000m)        |
| 1020408 | GeoEye Digital Camera (2,000m)        |
| 1020409 | GeoEye Digital Camera (3,000m)        |
| 1020412 | Custom Peli Case for RGeo-eye® Camera |
| 1020264 | GeoEye Centraliser 76-110mm           |
| 1020265 | GeoEye Centraliser 90-1800mm          |
| 1020266 | GeoEye Centraliser 180-260mm          |
| 1020267 | GeoEye Sinker Bar                     |

\* The depth rating on coaxial cable is dependent on the coaxial cable properties.



The system incorporates RGeo-fast® delivering 1 Megabit/sec communication speed enabling the acquisition of high resolution video feed from downhole (to 3000m) in air or water filled open or cased boreholes while allowing real-time viewing for the surface operative.

The camera has auto focus, a frontal LED internal array with adjustable lighting intensity, and a viewing resolution of SVGA (800 x 600) at 25frames/sec.

The acquisition software supplied with RGeo-eye® allows screen shots to be captured and text editing whilst viewing/recording. Where more detail is required, full colour 'snapshot' images can also be captured at 1600 x 1200

First release of the RGeo-eye® camera is rated at 75°C (high temp versions coming soon).

► **CLICK HERE  
FOR ENQUIRY FORM**