



Accelerometers & Magnetometers

2.08m (82")

Gamma

Telemetry Module

The GeoKey® Telemetry module with Navigation pack is the topmost acquisition tool in the stack, immediately below the Downhole Tension/Compression module.

Its main function is to collect and combine digital data from all other tools and to transmit this in a digital form via the logging wireline to the surface acquisition system. It also provides control functions and tool power to the other logging tools.

Principle of Measurement:

All tools in the stack communicate with the Telemetry module over a common internal RS485 data bus. The Telemetry module organises this data and transmits it to the surface using proprietary high-speed protocol. Data is acquired on a depth basis with a sample interval selected to optimise measurement resolution/logging speed.

SPECIFICATION:

Features

- Bi-directional digital transmission
- Compatible with industry standard 5/16" or larger diameter cable
- Continuous borehole orientation log

Measurements

- Natural Gamma
- Vector data sourced from orientation package creates:
 - Borehole inclination
 - Borehole direction
 - Borehole drift
 - True vertical depth
 - Relative Bearing
 - Magnetic Tool Face
 - Total G field
 - Total B field

Applications

- Natural gamma:**
 - Lithology indication
 - Shale measurement
 - Bed-boundary/bed thickness measurement
 - Correlation between logs and wells
- Borehole inclination and direction:**
 - QA of borehole construction
 - Bed-thickness correction
 - Bed-thickness estimation
 - Surveying and deviation checks

Operating Conditions

Borehole type: open hole Ø:102mm (4") to 305mm (12")

Specifications

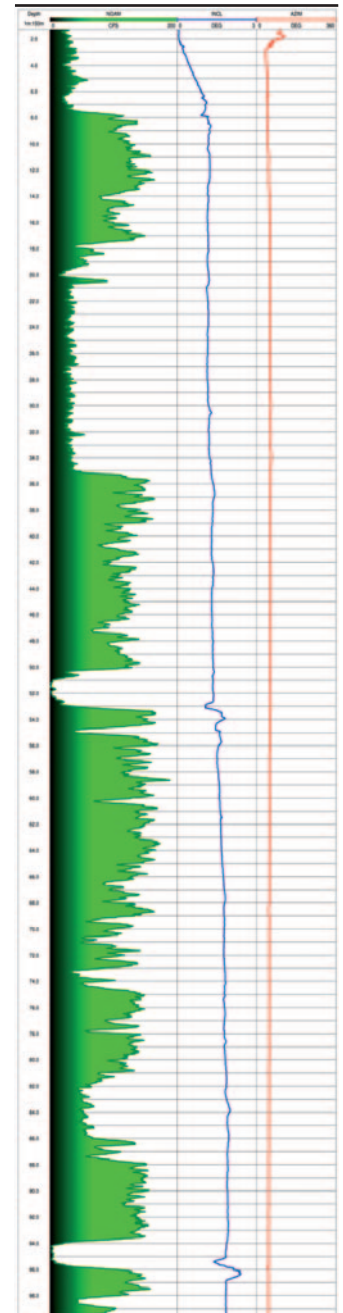
Diameter:	63mm (2.5")
Length:	2.08m (82")
Weight:	23kg (51lb)
Max. temperature:	125°C
Max. pressure:	86MPa (12,500psi)
Inclinometer:	Triaxial Accelerometers
Azimuth:	Triaxial Magnetometers
Natural gamma detector:	101 mm x 38 mm NaI(Tl) Scintillation crystal

Part Numbers

1017919 Telemetry - includes gamma, Navigation pack

Accessories:

- 1015464 Natural gamma check calibration blanket
- 1004127 Make-up plate
- 1004128 Assembly wrench



Example of logging data

▶ **CLICK HERE FOR ENQUIRY FORM**