

4-Arm Caliper Module

The 4-Arm Caliper module consists of two pairs of linked caliper arms providing borehole size and orientated shape.

The combination of X-Y caliper data allows for accurate borehole volume calculations, break-out investigation and stress analysis.

Principle of Measurement:

The X-Y caliper provides continuous measurements of the borehole diameter from two independent pairs of linked arms. Data from these can be combined with orientation data from the Telemetry module to provide an accurate record of borehole orientation, size and shape.

SPECIFICATION:

Features

Sensitive X-Y caliper

Measurements

X and Y calipers
Borehole volume (derived)

Applications

Hydrocarbons/water/minerals/engineering
Borehole diameter in two axes
Borehole break-out for stress analysis
Cracks, fissures and casing defects

Operating Conditions

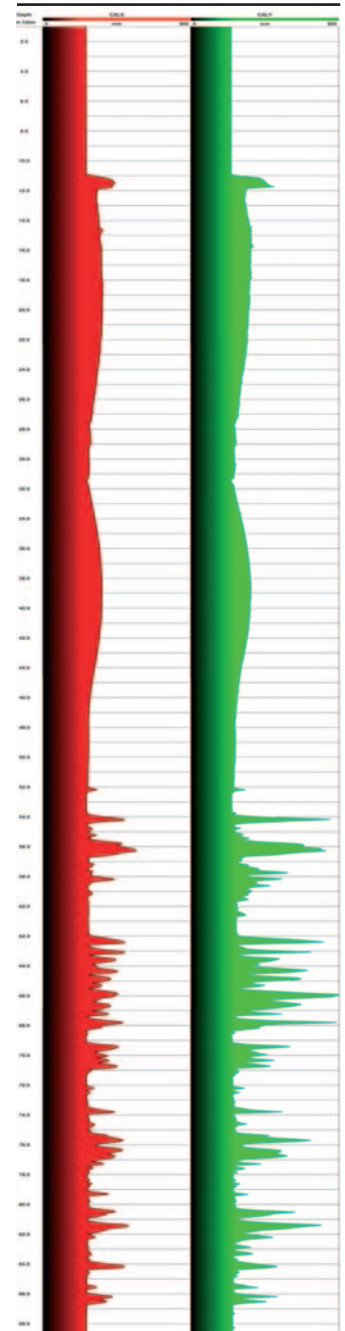
Borehole type: open/cased, water/air-filled
Centralisation: recommended

Specifications

Diameter: 63mm
Length: 2.35m (92.5")
Weight: 23kg
Temperature: 125°C
Max. pressure: 5000 psi
Caliper range: 75mm to 700mm maximum

Part Numbers

1017950 4-Arm Caliper module



Example of logging data

▶ [CLICK HERE FOR ENQUIRY FORM](#)