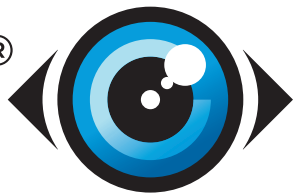


Seeing is believing - RGeo-eye® is the world first high-speed wireline borehole camera system. A slimline full colour downward view camera, operating to 3000m (10,000ft) on a 4-core or coaxial cable at high transmission rate and fully compatible with existing Robertson Geo winches and surface systems. ”

RGeo-eye®

Downhole Camera



RGeo-fast® 
Delivering 1 Megabit/sec communication speed



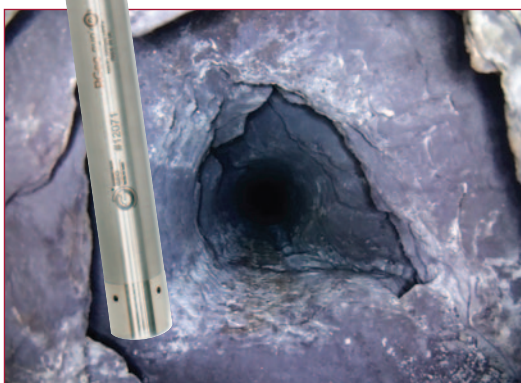
GeoCAD®, RGeo-eye® and RGeo-fast® are **ROBERTSON GEO** registered brands

RGeo-eye® employs a downward facing window with a fish-eye lens fully corrected for lens distortion before data is compressed and sent uphole. An LED light source, with controllable brightness is integral to the probe.

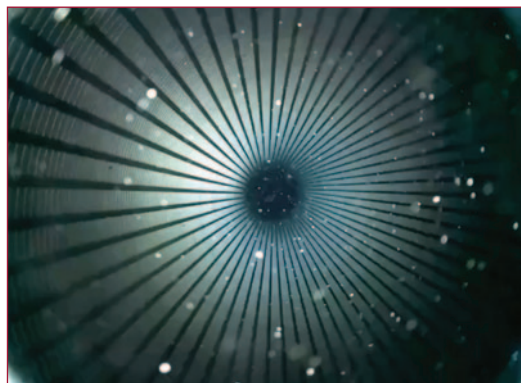
Seeing is believing

RGeo-eye® Downhole Camera

The RGeo-eye® camera system is a new introduction of a design and build development by Robertson Geo. It has a deep operating range for the acquisition of high quality video feed for deep subsurface applications. The camera operates on industry-standard 4-core or coaxial wireline cable, and offers pressure ratings to 5000 psi and a 90°C temperature rating.



Open hole.



Cased hole.

RGeo-fast®

RGeo-fast® 
Delivering 1 Megabit/sec communication speed

The system incorporates **RGeo-fast® delivering 1 Megabit/sec communication speed** enabling the acquisition of high resolution video feed from downhole (to 3,000m) in air or water filled open or cased boreholes while allowing real-time viewing for the surface operative.



The camera has auto focus, a frontal six LED internal array with adjustable lighting intensity, and a user selectable resolution of SVGA (800 x 600) or (600 x 600), at up to 30 frames/sec.

The standard RGeo-eye® camera is rated at 90°C at 5,000 psi (3,000m), and is offered in three versions – 1,000m, 2,000m and 3,000m.

The acquisition software package provided with the RGeo-eye® camera system allows extensive operator control including video resolution, frame rate, shutter speed, lighting brightness, white balance, UXGA 'snapshot' mode and real time video annotations.

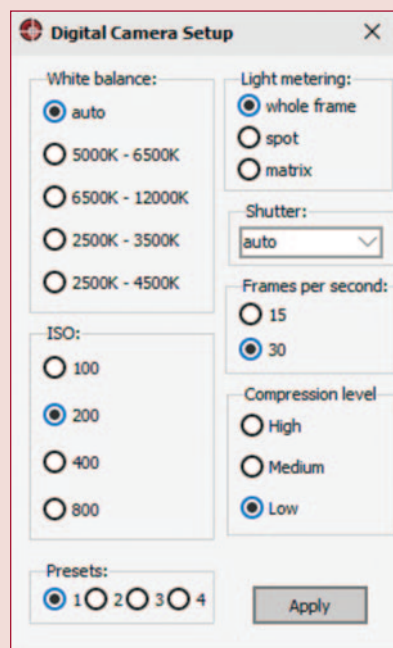
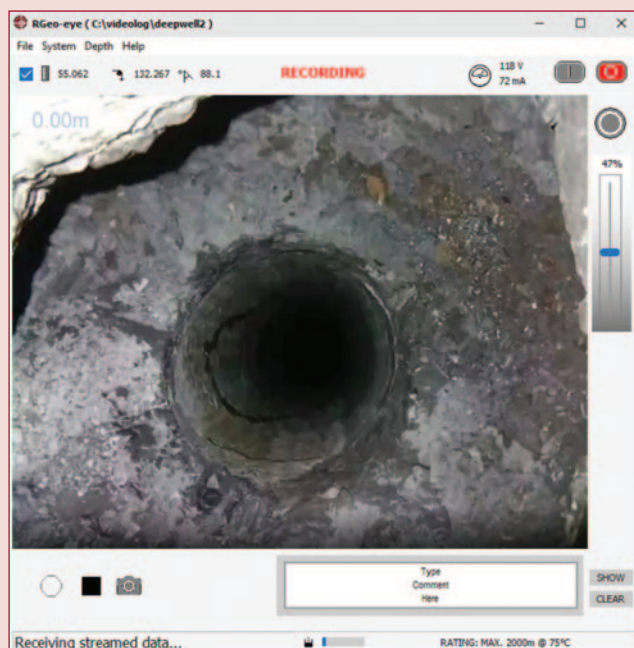
Four user definable presets allow the operator to store optimal settings for various borehole conditions. Video is recorded in AVI and converted to MP4 for storage and relay.

It allows screen shots to be captured and text editing while viewing/recording. Where more detail is required, full colour 'snapshot' images can also be captured at 1600 x 1200.

The RGeo-eye® is a robust, easy to deploy downhole camera at 1.08m (or 1.91m with sinker bar) x 43mm and only 5kg.



The RGeo-eye® camera comes with acquisition software that's easy to configure and work with, offering resolution control; lighting control; depth recording; text editing; recording video; screenshots; RGeo-eye® specification and depth & temperature warnings; Power meter and High res. frame capture mode with zoom-in function.





Applications:

Borehole and casing integrity inspection
Surveillance of mines, shafts, caverns and voids
Assessment of deep concrete piles
Pre-logging borehole examination
Damage detection in subsurface structures

Operating Conditions:

Borehole Type: Air/water filled open hole or cased hole
Recommended Logging Speed: 2 – 5m/min
Depth rating: 3,000m on 4-core cable
or 1,000m on coaxial cable*

Specifications:

Diameter: 43mm
Length: 1.08m, or 1.91m with sinker bar
Weight: 5kgs
Communication rate: RGeo-fast® 1 Megabit/sec
Resolution: Up to 30 frames per sec SVGA (800x600)
or (600 x 600) - User selectable
'Snapshot' mode: high resolution still image
at UXGA (1600 x 1200)
Standard temperature rating: 0-90°C at 5000psi (3000m) -
1,000m, 2,000m and 3,000m versions available
Max pressure: 5000 psi (3,000m)
Autofocus
Frontal LED internal array, with adjustable lighting intensity
Light output: 6 x 282lm @ 3,000K LEDs
Additional lighting options for large diameter voids
CE CE Certified and manufactured within an
ISO9001:2015 quality system
Recommended minimum viable computer specification:
i7 7700 processor with 500GB SSD, 16GB of memory running
Intel HD Graphics 630 card running Windows 10 64-bit

Part Numbers:

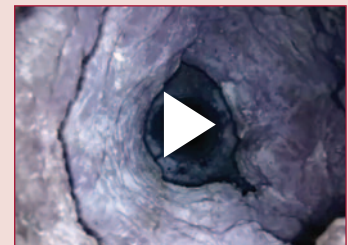
I020263 RGeo-eye® Digital Downhole Camera (1,000m)
I020408 RGeo-eye® Digital Downhole Camera (2,000m)
I020409 RGeo-eye® Digital Downhole Camera (3,000m)
I020412 Custom Peli Case for RGeo-eye® Camera
I020264 RGeo-eye® Centraliser 76-110mm
I020265 RGeo-eye® Centraliser 90-180mm
I020266 RGeo-eye® Centraliser 180-260mm
I020267 RGeo-eye® Sinker Bar

* The depth rating on coaxial cable is dependent on the coaxial cable properties.

Downhole videos:



If viewing this literature digitally, click on any of the downhole videos to open the YouTube RGeo-eye® playlist.



Recommended minimum viable computer specification:

i7 7700 processor with 500GB SSD, 16GB of memory running Intel HD Graphics 630 card running Windows 10 64-bit

GeoCAD®
www.geocad.com
+44 (0) 1492 582 323
more@geocad.com

**ROBERTSON
GEO**
Unlocking Your GeoData

GeoCAD®, RGeo-eye® and RGeo-fast® are ROBERTSON GEO registered brands